



GAT MONTHLY MEMBERSHIP PROGRESS REPORT

Results as of: 5/31/2023

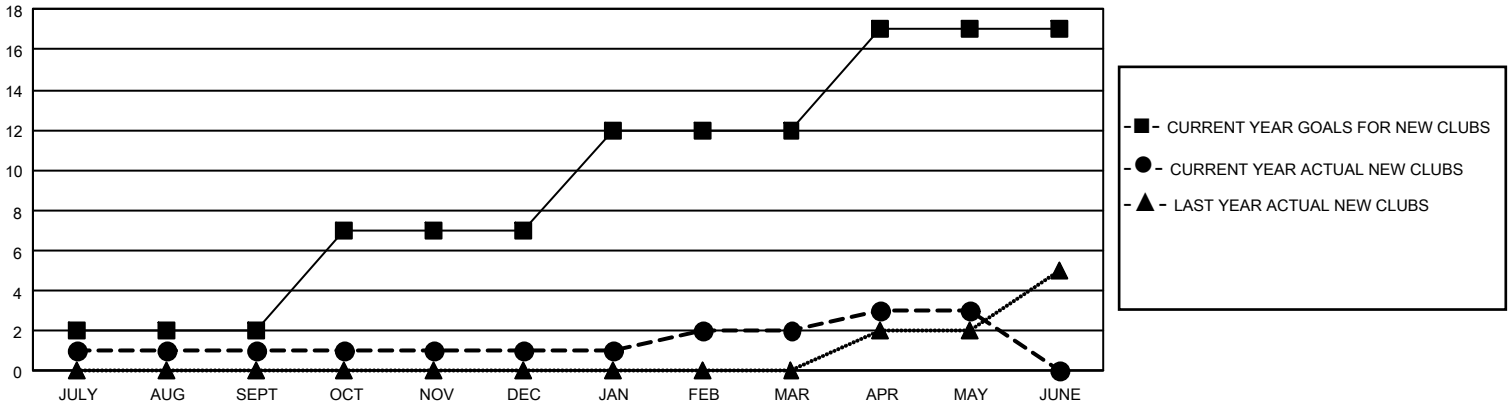
GMT Constitutional Area 3, Group F

REPORT DOES NOT INCLUDE CLUBS IN UNDISTRICTED AREAS.

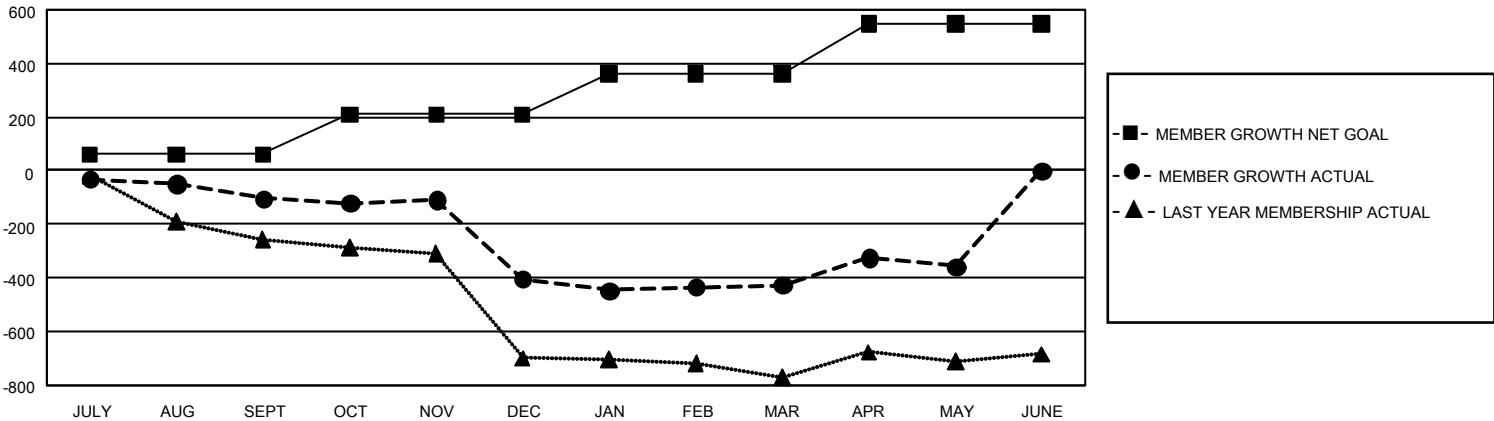
Clubs			
RESULTS FOR 2022-2023			
QUARTER	NEW CLUB GOAL	NEW CLUBS	DROPPED CLUBS
JULY/AUG/SEPT	6	1	3
OCT/NOV/DEC	15	0	13
JAN/FEB/MAR	15	1	1
APR/MAY/JUNE	15	1	2

Members			
RESULTS FOR 2022-2023			
QUARTER	MEMBER GROWTH NET GOAL	MEMBER GROWTH ACTUAL	DROPPED MEMBERS ACTUAL (including transfers)
JULY/AUG/SEPT	60	175	249
OCT/NOV/DEC	150	220	504
JAN/FEB/MAR	150	144	125
APR/MAY/JUNE	188	201	120

GOALS AND ACTUAL NEW CLUBS CUMULATIVE



GOALS AND ACTUAL MEMBERS CUMULATIVE



DROPPED CLUBS: 19	146 CLUBS OF 264 ADDED 1 OR MORE NEW MEMBERS	GENDER DISTRIBUTION	
		MALE 3,063 (46.48%) FEMALE 3,506 (53.20%) NON BINARY 0 (0.00%) PREFER NOT TO ANSWER 21 (0.32%)	
DROPPED MEMBERS		CLICK HERE FOR CUMULATIVE MEMBERSHIP DATA	TOTAL FAMILY UNIT MEMBERS 2,905
DECEASED 45 CLUB CANCELLED 187 OTHER 765 TOTAL 997			FAMILY MEMBERS PAYING HALF DUES 1,559